

# KTS350

## TECHNICAL

## DATA SHEET



KTS350-X

### Region

North America

### Full range

1000m/ 3280ft

### Field of view

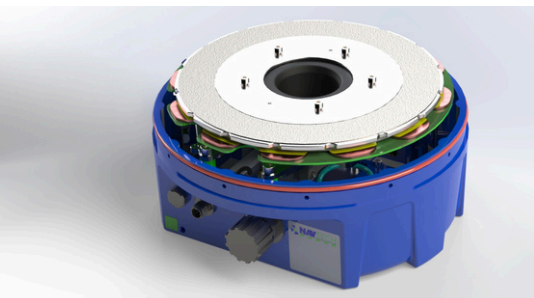
360°

### All conditions

In poor visibility

## NO MAINTENANCE

Each ClearWay radar dish rotates at 4Hz inside the enclosure, meaning millions of rotations throughout its 10-year lifecycle. All radars incorporate ultra-reliable and zero maintenance direct-drive motor units, giving service-free operation for each device whilst installed at the roadside.



NEMA TS2 Section 2  
FCC approved  
Patented

## ClearWay™

### 360° radar-based automatic incident detection

ClearWay is Navtech Radar's 360° radar-based incident detection and traffic data system that operates in all weather and lighting conditions, including in complete darkness. Navtech's reliable 360° scanning radars are coupled with intelligent tracking algorithms and sophisticated decision-making software to give you full situational awareness on your road when you need it the most. ClearWay has been deployed across the world in some of the most challenging conditions and is proven to make roads safer and improve journey times.

# TECHNICAL SPECIFICATIONS - KTS350

## TYPICAL SPACING

500m/1640ft

## FREQUENCY

34-35 GHz

## UPDATE RATE

4Hz

## DIMENSIONS

### Measurements

H545mm x D420mm - 21.5in x 16.5in

### Weight

11kg / 24.2lbs

## RADAR CHARACTERISTICS

### Field of view

360°

### Measurement rate

400 per rotation

### Radius

500m / 1640ft

### Full range (diameter)

1000m / 3280ft

### Range resolution

17.5cm / 0.57in

### Beam shape

### Horizontal

1.8°

### Vertical

3.6°

### Azimuth sampling

0.9°

## CONNECTION

### Power

### Connectors

M12 5 wire

### Ethernet

IP67 connector - RJ45 CAT5e - 1 Gbps ethernet

### Earth

M5 thread

### Pressurisation valve

Yes

### Speed

### Network

100/1000Mbps (configurable)

### Bandwidth

<0.5Mbps per radar in normal operation  
~38Mbps viewing full disc raw data  
(for commissioning only)

### Voltage input

24V DC

### Tolerance

21.6V to 26.4V

### Consumption

30W (45W with heater activated)

## ENVIRONMENT

<b>Operating Temperature</b>	-34°C to +74°C / -29.2°F to +165.2°F
<b>Enclosure</b>	UL50/50E
<b>Weather</b>	Fully functional in wind, rain, snow, fog, ice, humidity 0-100% condensing
<b>Visibility</b>	Full performance through fog and smoke
<b>IP rating</b>	IP67
<b>Saline</b>	BS EN 60068-2-52:1996 Test Kb Severity 3

## ELECTRICAL AND RADIO

<b>Radar frequency</b>	34-35 GHz
<b>Compliance</b>	KC, FCC, ISED, NEMA TS2 Section 2

## SOFTWARE

<b>Protocols</b>	TCP/IP, UDP, IPv4, HTTP, HTTPS, TLS1.2, SSH
<b>Interface</b>	Vertex via web browser
<b>Authenticated access</b>	Yes
<b>Signed software</b>	Yes - SHA512

## SECURITY

<b>Encryption library</b>	Botan
<b>Authentication</b>	Yes (password change or reset through admin account)
<b>Account management</b>	Password update only (3 inbuilt accounts)
<b>Firewall / Access Control</b>	Yes
<b>SSH</b>	Yes
<b>Secure mode</b>	Yes (closes port 80, only allows SSH with secure key, no UDP multicast)

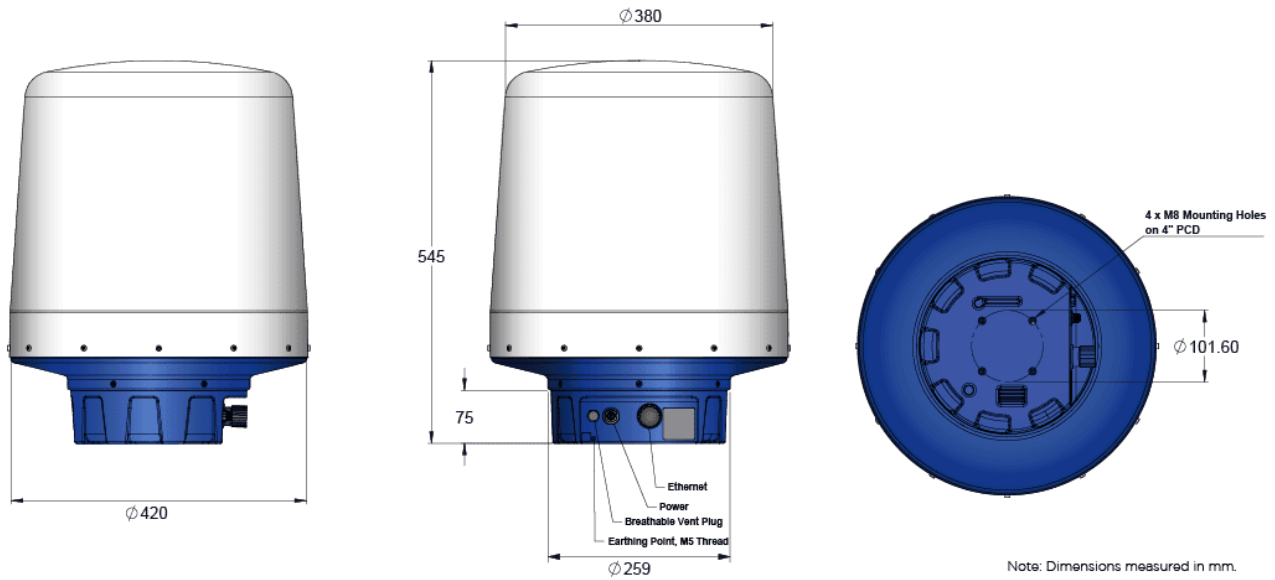
## ACCREDITATION AND COMPLIANCE

<b>NEMA TS2</b>	TS-2-2021 V03.08, Section 2
<b>FCC</b>	Yes

## PATENTS

<b>Patent</b>	US Patent No. 10 522 893
---------------	--------------------------

# DIMENSIONS



Specifications are subject to change without notice.  
 All images used are for illustrative purposes only.  
 Due to customer use beyond our control, Navtech Radar cannot assess product relevance for specific applications. Customers are responsible for testing products and reviewing regulations to ensure safe operation.



Navtech is awarded to the following ISO standards

- ISO 9001:2015 Quality
- ISO 45001 Health and Safety
- ISO 27001 Information Security
- ISO 14001 Environmental
- ISO 20000 IT Service Management

**Navtech Radar**



+44 (0) 1235 832 419



[www.navtechradar.com](http://www.navtechradar.com)

**NAVTECH**  
**RADAR**

**Safety is everything.**

ITS-PM-0002 V2.2