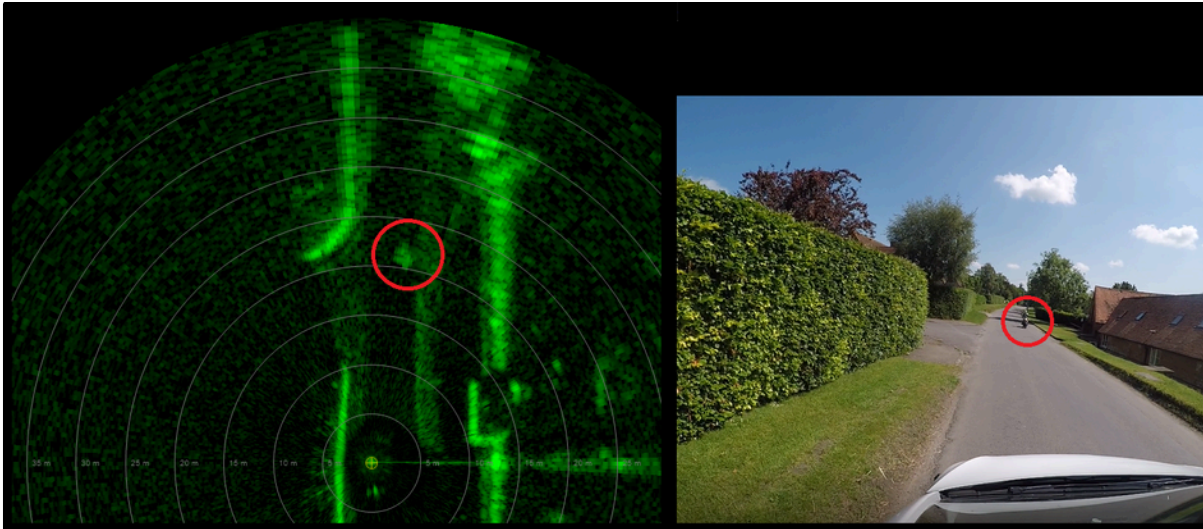


Example Radar Data

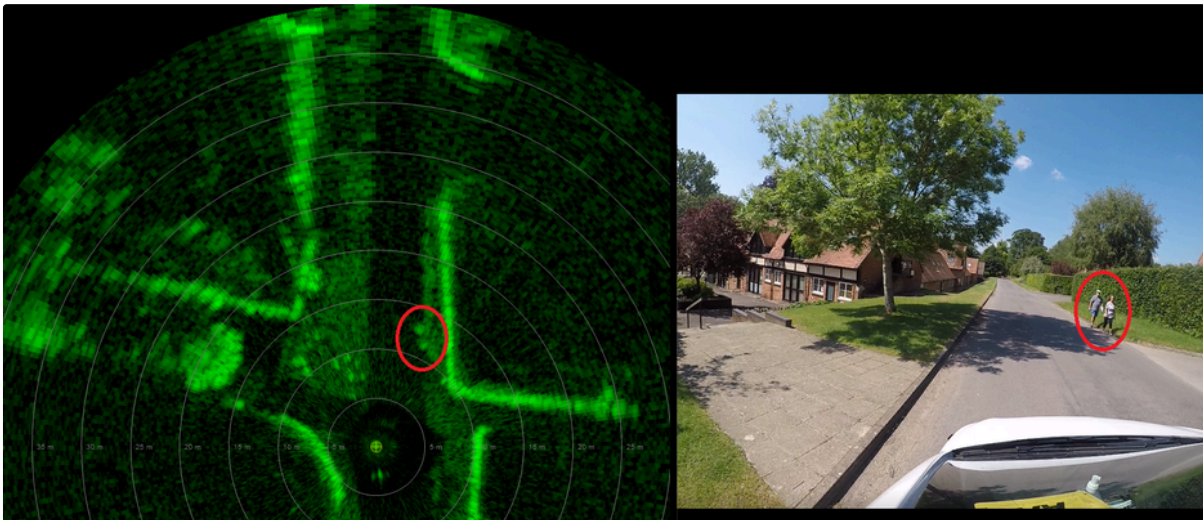
This section provides some short radar data recordings which can be replayed as a network stream using [this](#) utility.

There are additional links to third party datasets. Please [contact us](#) if you have a public shared dataset that you would like listed.

If there you have a particular use-case for the high resolution, weather and visibility independent data that our radars provide, and would value some example radar data to develop your application, please get in touch with industrial.automation@navtechradar.com.



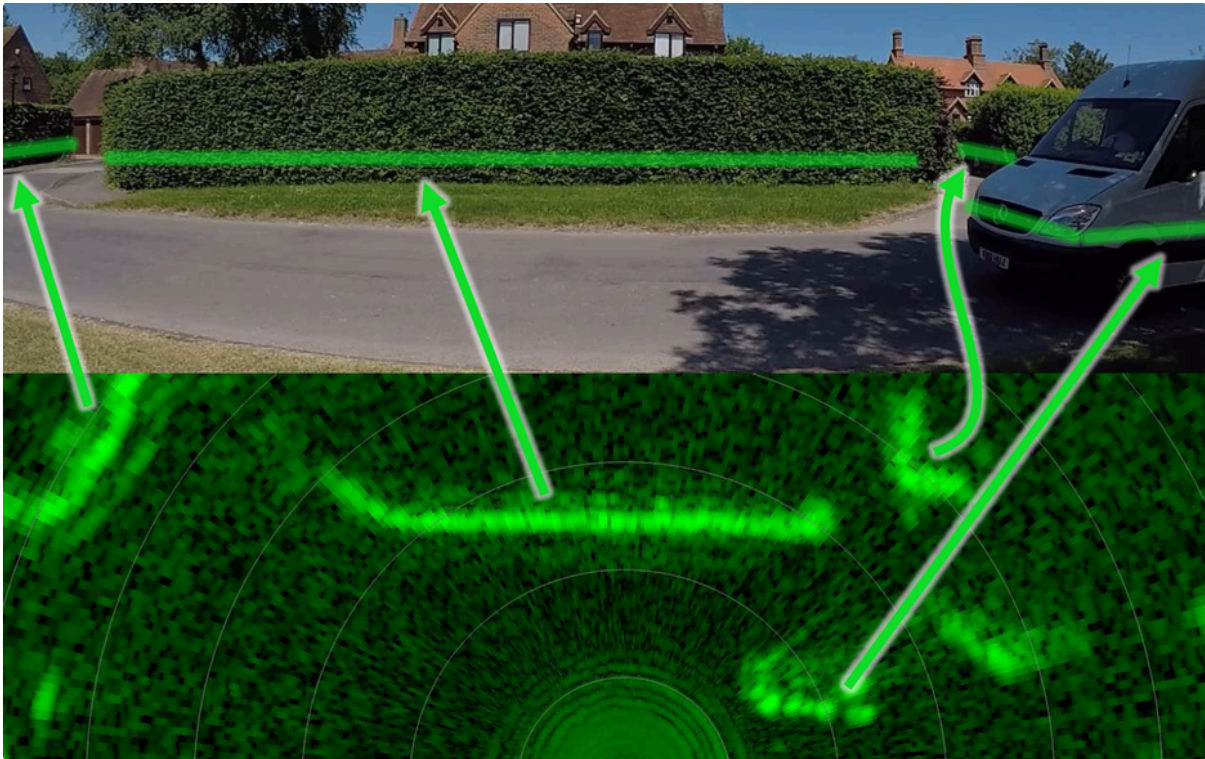
Showing an approaching motorcyclist with radar data acquired from a moving road-vehicle



Showing pedestrians ahead of a road vehicle travelling at ~45kph



Showing the near-field view from a radar and a photograph.



Showing the near-field view from a radar and a photograph.

Search this section

Contents

- Static Roadside Sensor
- From moving road vehicle
- From a moving vehicle (8Hz refresh rate)
- In development - Exposed Doppler - Radar Dataset
- Example Marine datasets
 - From small vessel entering an estuary
 - Vessel looping a Buoy far from any other detectable objects
 - Object detection from a small Vessel
 - Berthing manoeuvres next to a Jetty/Pier
 - Small Vessel looping a large static structure (Bridge pylon)
 - Sample Radar data in ASTERIX Cat 240 format
 - In development - Extended range CIR dataset
 - Sample data from river boat in ASTERIX Cat 240 format
 - Sample data from River Thames, London
- Customer Datasets
- From a Bucket Wheel Reclaimer