

AdvanceGuard's Integrations

Integrates seamlessly with third-party systems

AdvanceGuard is the most technologically advanced surveillance system, allowing simple integration with leading and bespoke Video Management Systems (VMS) and Security Management Systems (SMS) to ensure maximum safety. AdvanceGuard is renowned for its easy integration and can be designed to work with custom bespoke solutions.

Safety is everything.

Easily Integrated

Intuitive interface integrates seamlessly with existing systems

Genetec

AdvanceGuard takes full advantage of the recording capabilities and alarm management within the Genetec Security Centre software. Through the use of bookmark and alarm integration, AdvanceGuard provides operators with a comprehensive overview along with post-incident analysis. The integration can provide operators with a real-time map display that shows target data alongside video displays. This offers a single, unified interface for operators to work with, minimising the amount of training required.

Bosch

The Bosch Video Management System (BVMS) is renowned for its low nuisance alarm rate. By integrating AdvanceGuard it enables the detection of intrusions in all-weather and light conditions, routing video footage back to the BVMS operator, providing highly reliable, continuous and automatic perimeter security surveillance.

Pelco VMS (using Standard XML Integration ICD-001)

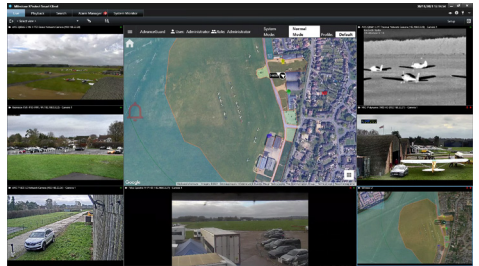
By integrating AdvanceGuard with Pelco VideoXpert, operators can gain full situational awareness of their site. The rich AdvanceGuard mapping is embedded, providing a user-friendly interface within the VideoXpert Ops Center that allows operators to respond to incoming alerts quickly and efficiently.

Dallmeier

Navtech is an official Dallmeier partner and AdvanceGuard is regularly integrated to provide advanced perimeter protection. When AdvanceGuard detects an alarm, it is able to seamlessly toggle recordings and bookmarks on SMAVIA cameras. The system is user friendly, as operators can be fully trained within 15 minutes. This minimises disruption and increases operator confidence, so the system can be used to its full capabilities.

Milestone

AdvanceGuard directly supports the majority of PTZ cameras currently available on the market. The integration with Milestone deploys the full recording capabilities, alarm management and bookmark functionality of the latest versions of Milestone XProtect to create a cohesive security system that is able to raise alarms and provide visual verification.



IndigoVision

AdvanceGuard can be integrated with IndigoVision to provide visual verification and bookmarks of alarms. AdvanceGuard automatically sends camera movement updates to the IndigoVision control center. When AdvanceGuard triggers a camera to operate, the event data will be returned to the control center and additional data will be shared as a bookmark each time an alarm event is generated.

Advantech ADAM6060

AdvanceGuard can support multiple ADAM units, offering greater flexibility. It intelligently handles the indexing of relays and inputs so that the complexity of a multi-module setup is hidden from the user. The ADAM unit provides the ability for AdvanceGuard to communicate with external systems through the use of relay; providing useful triggers to AdvanceGuard through the use of the digital inputs.

Standard and Custom Integrations

Adaptable and scalable real-time threat analysis solution

Standard XML Integration (ICD-001)

A standard XML integration enables the AdvanceGuard user-interface to be integrated with most VMS and PSIM systems, easily and efficiently. When AdvanceGuard detects an event, such as alarms, it sends this information directly to the integration manager which translates this information into a suitable data format required to transmit into external systems using a TCP/IP connection. The standard XML integration can also be used to integrate 3rd party hardware and software into the AdvanceGuard user-interface, providing additional flexibility when needed.

Custom Bespoke Integration

If for any reason the above integration solutions are unsuitable, then we would be happy to discuss your requirements with you and work towards creating a custom bespoke integration solution that would meet your requirements.

- ✓ **All-weather performance**
Know what's going on in any environment, in any weather, with accurate detection in all conditions
- ✓ **Full situational awareness**
Pinpoint the exact location of intruders, their direction of movement and speed
- ✓ **Fully automated operation**
Automatically directs cameras and keeps track of unlimited targets